

A large, faint watermark of the United States Environmental Protection Agency (EPA) logo is centered in the background. The logo features a stylized flower with three leaves and a circular border containing the text "UNITED STATES ENVIRONMENTAL PROTECTION AGENCY".

Processing Facility Demobilization and Restoration

Community Advisory Group Meeting

October 1, 2015



Background



- Facility remains in operation
- Once the *Processing Facility Demobilization and Restoration Plan* is approved, equipment will be demobilized, site will be decommissioned and returned to owners
- Requires coordination with state and local agencies and property owners
 - Discussions and decisions on all major elements
 - Ongoing maintenance
 - Decisions and maintenance based on future use

North Wharf



- Equipment being disconnected from North Wharf: 1 clarifying tank, 6 filter presses, several shaker screens and conveyors
 - Similar equipment remains at south wharf which is fully functional



Multiple Challenges



- What is to remain?
- What is to be disposed of?
- What may be salvaged/ reused?
- Has it been in contact with PCBs?
- What is future use of various areas of site?



Major Elements of the Processing Facility

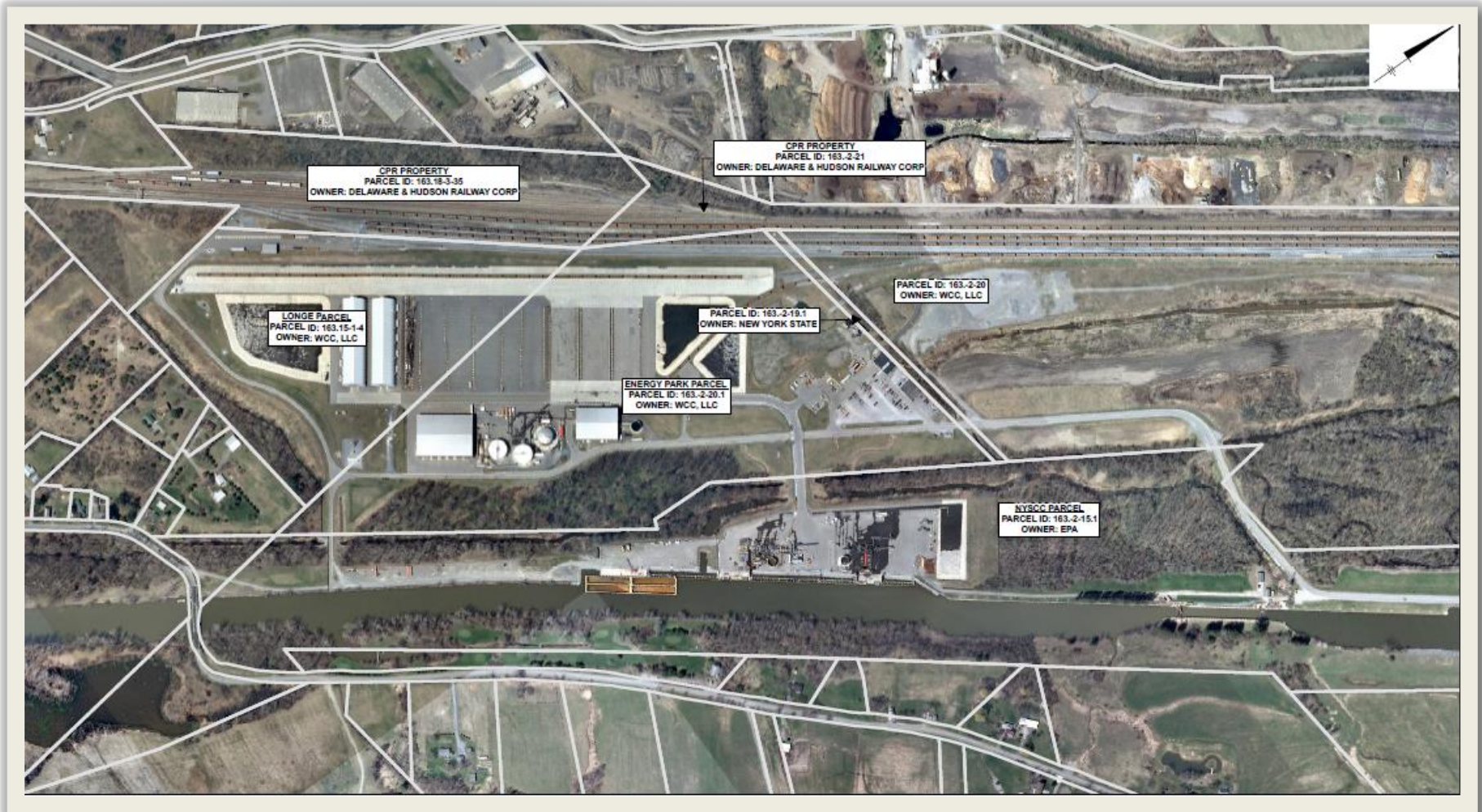


- Sediment Processing Equipment, including stationary and moveable equipment (e.g. size separation equipment, vehicles)
- Structures (e.g. Water Treatment, Filter Press buildings)
- Infrastructure (e.g. stormwater, electrical)
- Concrete and asphalt areas
- Fill and Flexible Membrane Liner (FML)

Processing Facility Overview



Property Owners



Decontamination Procedure



- All items are inventoried and tagged
- Gross decontamination (scrubbing)
- Water wash/pressure wash
 - May involve hot water or use of detergents depending on surface
- Wipe sampling to confirm the procedure
 - Number of samples will vary
 - Sampling may be reduced after data is gathered on decontamination effectiveness

Processing Equipment Demobilization



- Systems will be flushed with water first
- If salvaging, further washing and confirmation sampling
- If intended for disposal, sampling for waste characterization



Structures



- All equipment and interior walls removed
- Water Treatment Plant building cleaned
- Dewatering facility decontaminated
- Filter cake building structure to remain in place, cover may be decontaminated
- Pipes flushed and grouted in place



Asphalt and Concrete



- Paved areas within contamination zone will be sampled
- If necessary, top surface layer may be removed if lower layers are not contaminated
- Property owners have requested that all paved areas remain if possible



Fill Areas and Flexible Membrane Liner

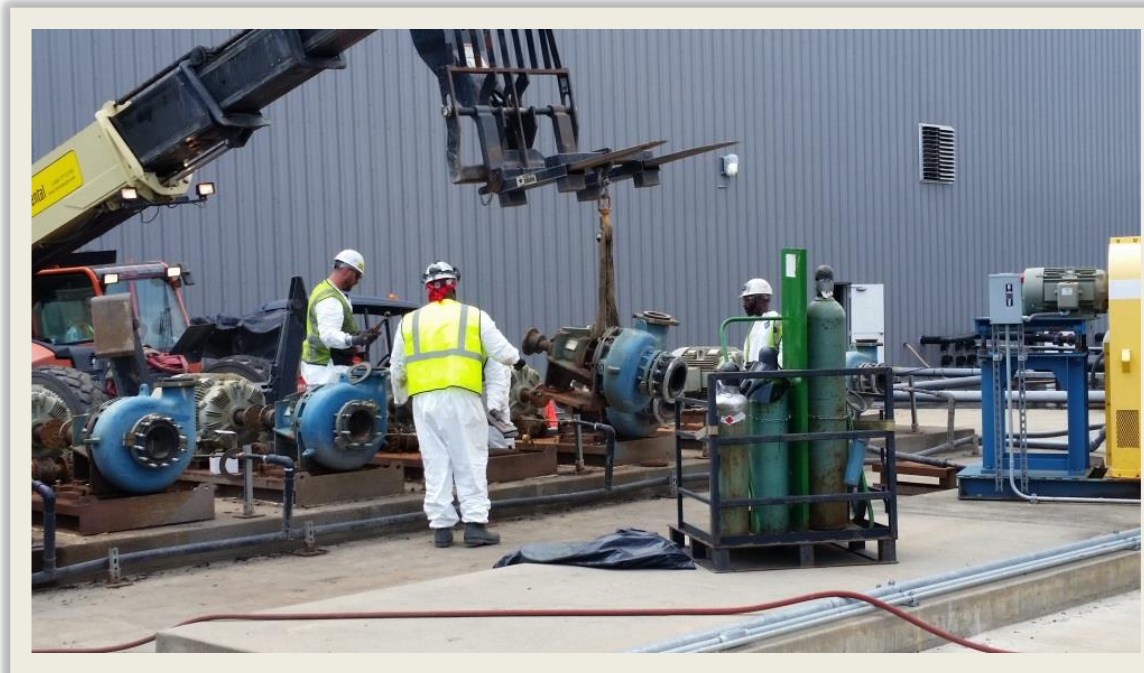


- Fill under paved areas will remain in place as appropriate
- Fill under other areas will be tested as needed
- Some fill materials may be designated for beneficial use if sampling confirms less than 1 mg/kg
- PCB levels for fill materials will be evaluated on a case by case basis to determine if it can remain on site
- In some areas, liner may be removed if surface fill materials are removed
- Liner may be perforated to allow for drainage depending on the circumstances

Equipment/Material Disposition



- Areas will be designated for temporary storage of items designated for disposal/reuse/salvage
- Additional sampling may be required
- Rail and/or trucks will be used for removing materials and equipment from site
- Disposal at EPA approved facility

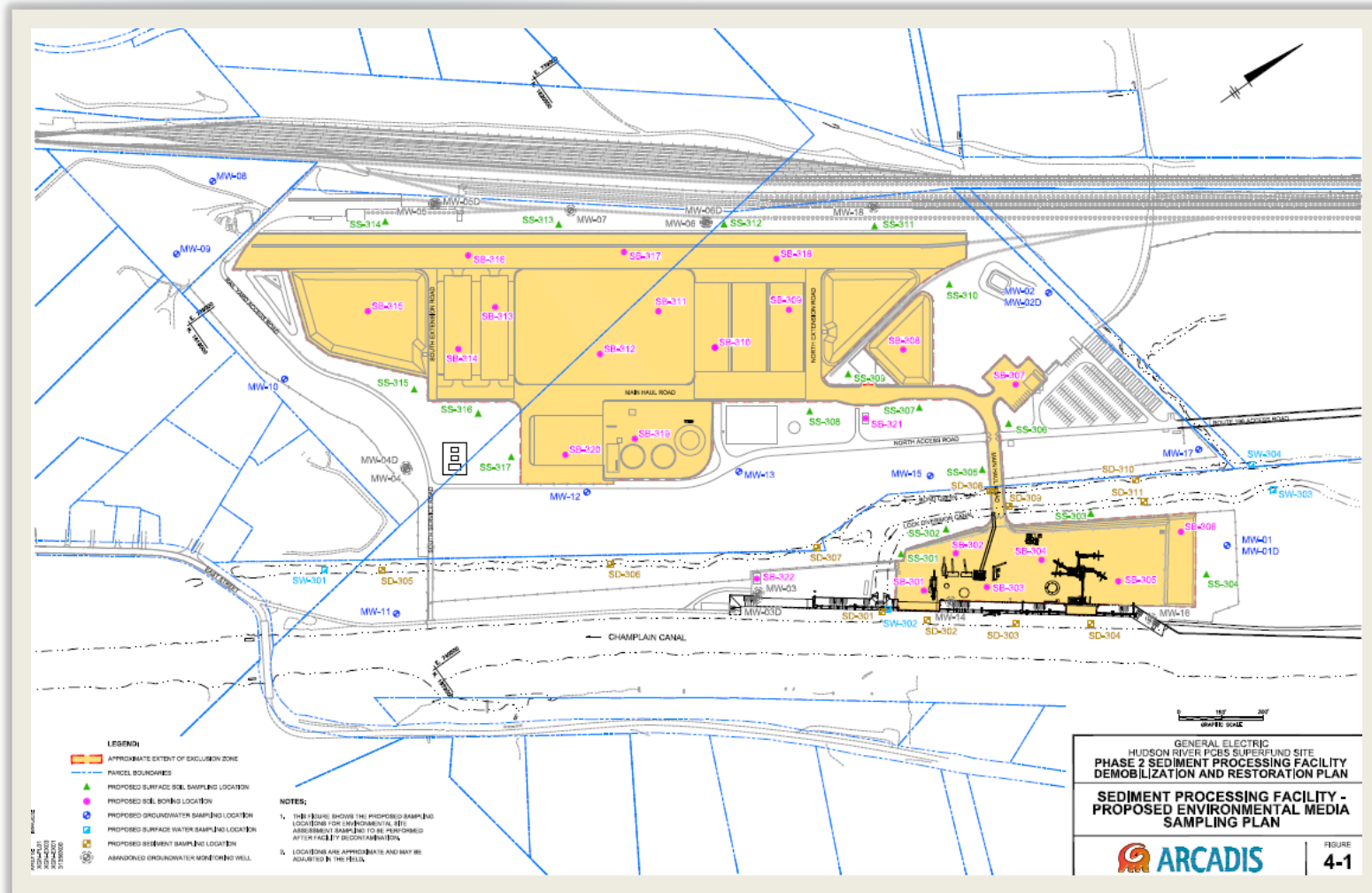


Decommissioning Testing



- Will include soil, surface water, sediment, and groundwater testing in and adjacent to facility
 - Includes sampling of Bond Creek, Champlain Canal, and Lock Diversion Canal
- Results will be compared to baseline sampling

Sampling



Controls and Monitoring



- Standard construction measures will apply (erosion control, spill control, dust control)
- Will include Quality of Life monitoring
- Air monitoring will be conducted as needed

Sequencing



- Need to consider the use of the Water Treatment Plant and stormwater systems for use in the decontamination process
- Plan includes a conceptual sequence of events



Facility Demobilization



Next Steps

- Discussions continue among GE, EPA, NYS, property owners, and municipalities regarding facility demobilization and future use
- Demobilization will continue into 2016
- The plan is located at www.epa.gov/hudson. It is also available at www.hudsonredgingdata.com
- Public input period ends October 5, 2015

Gary Klawinski, Director
U.S. Environmental
Protection Agency
Region 2 Hudson River Field Office
187 Wolf Road, Suite 303
Albany, NY 12205
EPAHRFO@outlook.com

Questions?

